

## **Xerox 4150 style Toner Cartridges...** 6R1275 / 106R1409 – Toner Cartridge Refilling Instructions for Xerox WorkCentre 4150, 4250, & 4260

The Xerox WC 4150 series is pretty popular out there. A compact 40 + ppm black and white machine which is said to be reliable and nearly trouble free. Now the toners are refillable and the opportunity to save a few bucks has arrived. This month, we'll take one of these rather simple cartridges apart and see what makes it tick.

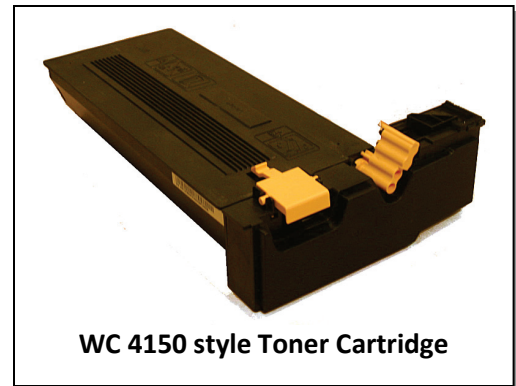
The original model in the series was the WorkCentre 4150 which is being replaced by the newer WorkCentre 4250 and 4260. The 4150 uses the Toner Cartridge 6R1275 which has a stated yield of 20K and currently retails for \$124.99. The newer pair of models: 4250 / 4260 use a different part number 106R1409 which has a stated yield of 25K. That one sells for \$153.-. Cost for a refill kit is well below 1/2 of the cost of a new cartridge and as you'll see, the refilling procedure is a quick and simple one... It's well worth getting into these things.

The Toner Reset Connector or "CRUM" (Customer Replaceable Unit Monitor) on this cartridge is basically a sticker with some tiny RF (Radio Frequency) electronics built into it and an "antennae" which is a coil of trace around the electronics in a small square. I've heard tale that some of the OEM ones had trouble and had to be returned for replacements... personally I've not seen that happen as of yet. The generic 4150 CRUMs which we've seen are bulkier with much larger electronics on them. After a few products failed to work consistently, the newest ones we tried are working just fine (thank goodness). I've not seen the CRUMs for the 4250 / 4260 out there yet but they will probably follow sometime soon.

Here's a quick step-by-step on the refilling procedure.

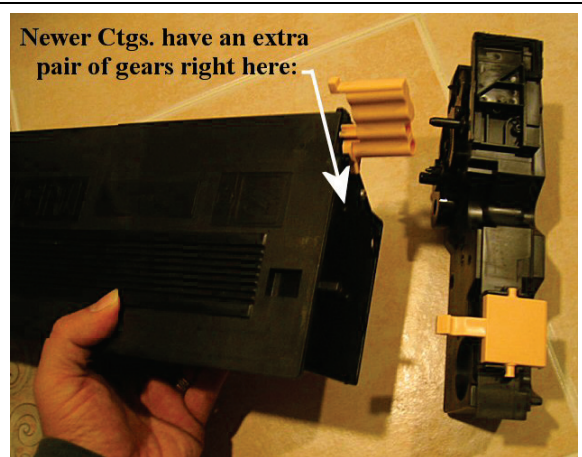
### **REFILLING PROCEDURE:**

1. Start by removing the Toner Waste Container from the front end of the cartridge. There are two screws from the rear (see Photo #1) & one screw from the front (see Photo #2). Take care... on some of the newer cartridges there were two extra gears were added which drive an extra agitator / paddle inside the Waste Container. The two gears are trapped between the Waste Container and when you remove the container, they will fall

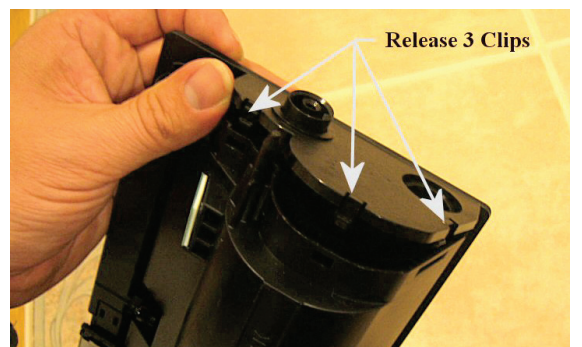


right off and roll away from you (and if Murphy has anything to say about it they'll find their way under a cabinet). See Photo #3... the arrow points to where the two gears would be found (I didn't have a cartridge handy which has these extra gears to take a picture of them). If your cartridge has them, take note of how they are positioned so you can reassemble properly later.

2. Empty out the Waste Container and vacuum what you can out of there while rotating the paddles and agitators to loosen up as much as possible.
3. Remove the Rear Cover by releasing 3 clips along the lower edge of the cover & pivoting upward (see Photo #4). Be careful and remove the Toner Agitator Coupling which stand out from that rear cover... it will fall right off as will the white coupling insert. (see Photo #5)
4. Use a tiny flat-head screwdriver to gently pry the Toner Fill Hole Plug out without damaging it... if you work your way around the circumference gradually, it'll come out in good condition. (see Photo #6)
5. Use a funnel to pour the Refill Toner into the cartridge through the Toner Fill Hole and re-install the Toner Fill Hole's Plug.
6. Re-install the Toner Waste Container (reinstall the two extra gears if they were present on your cartridge).
7. Replace the Toner Reset CRUM (Customer Replaceable Unit Monitor). The OEM ones are nothing more than a sticker with some tiny electronics built into it. The generic replacement ones are tiny electronic boards which come with peel and stick backing. See



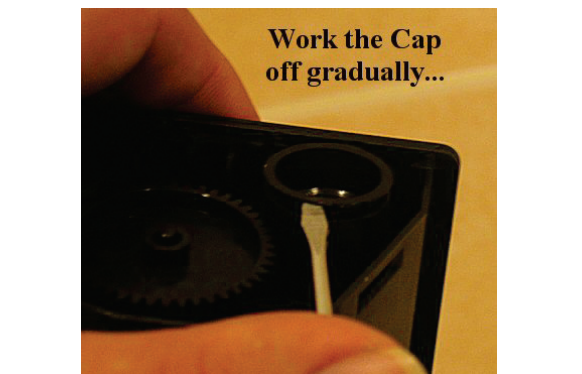
**Photo #3: Location of Extra Pair of Gears found on some cartridges.**



**Photo #4: Removing the Rear Cover...**

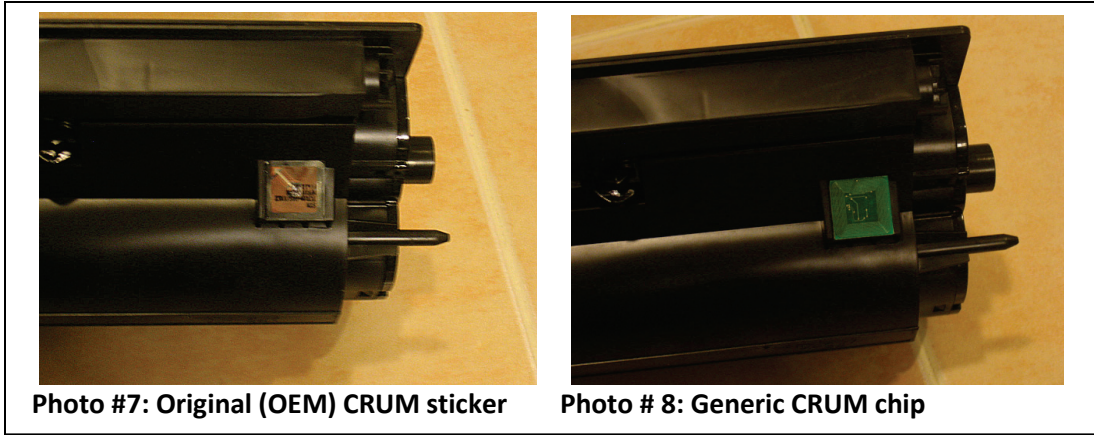


**Photo #5: Agitator Coupling & Insert...**



**Photo #6: Removing the Fill Cap**

Photo #7 & 8 for a comparison of an OEM sticker CRUM and an example of an aftermarket CRUM. Make sure you remove the original sticker before you install the new one (don't just stick it over the old one).



You're done... Simple isn't it?

That will do it for now... I'm hoping that soon the Drum Reset CRUMs will become available... Then the drum cartridge will deserve its own ENX article ... maybe next month? I guess we'll wait and see.

Happy Refilling everyone!

*Britt works for The Parts Drop, a company whose primary business is providing parts, supplies and information for Xerox brand copiers, printers and fax machines. You can find more information, including many of Britt's past ENX articles on their website, [www.partsdrop.com](http://www.partsdrop.com). If you'd like to read more about Xerox brand office equipment, there's also a complete listing of past articles under contributing writers on the ENX website ([www.ENXMAG.com](http://www.ENXMAG.com)).*